

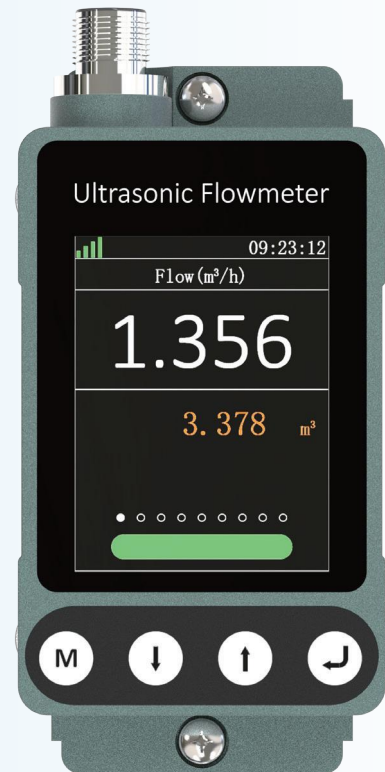
TM605 Compact Ultrasonic Flow Meter



Easy Installation
**Just
Clamp-On**

Product Description

Flo-Instruments concentrates on the development of flow measurement technology. Our products serve the real-time flow measurement of the production process and participate in process control. The main application industries are chemical production process, fine chemical production, cleaning industry, beverage industry, HVAC, building management, swimming pool etc. It is widely used in flow measuring and monitoring during production process. The application of ultrasonic flow meters can effectively and accurately control the flow of liquids while improving the performance of products, saving personnel investment, and bringing benefits to production enterprises. Therefore, TM605 ultrasonic flow meter came into being.

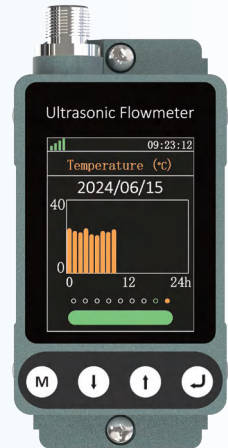


TM601 is a integrated ultrasonic flow meter, specially designed for meeting small-middle pipe diameter. It's very easy and simple in setting and installing. TM605 developed and adopted the ultrasonic principle of transit-time difference method sends and receives ultrasonic signals through the sensor. When the ultrasonic signal is transmitted and received through the flowing liquid, there will be one difference value between upstream and downstream, which can be used to calculating flow and velocity.

Product Features

TM605 adopts clamp-on installation. There is no need to change and break the and measured according to operation guide. Because of no moving parts, and no pressure loss, so no need stop production, it can be installed directly. In addition to above features, TM605 still features obvious advantage.

- **Unique Structure Design:** The TM605 adopts a circular magnetic steel design in structure, which can automatically clip-on and lock during installation. It only takes 2-3 minutes from installation to measurement.
- **Colorful Display Screen:** TM605 uses the currently popular IPS LCD display screen, which can easily read the data, even in low-light environments.
- **Flow Curve/Column Graph:** TM605 is equipped with total flow/-temperature column graph and a real-time flow curve graph, so that users can more clearly understand the real-time flow changes.



- **Temperature Display:** The bottom of display unit has temperature probe. It can measure the real-time temperature of pipe wall during liquid flowing and it will shown in flow/velocity data interface.
- **Easy Menu Option:** User can set up parameter and change easily through four keys. In addition, "Up Key" and "Down Key" can switch up display interface at random. The carousel points below the display screen can also be switched by using "Up Key" and "Down Key", and each interface displays different information.
- **Compatible Various Material & Liquids:** TM605 can almost meets the measurement of different clean liquids and pipe materials. Through the menu options, a set of TM605 can measure both metal pipes and plastic pipes, also both water and oil.

Product Application



HVAC



Agricultural
Irrigation



Water
Treatment



BMS



Food &
Beverage



Swimming
Pool



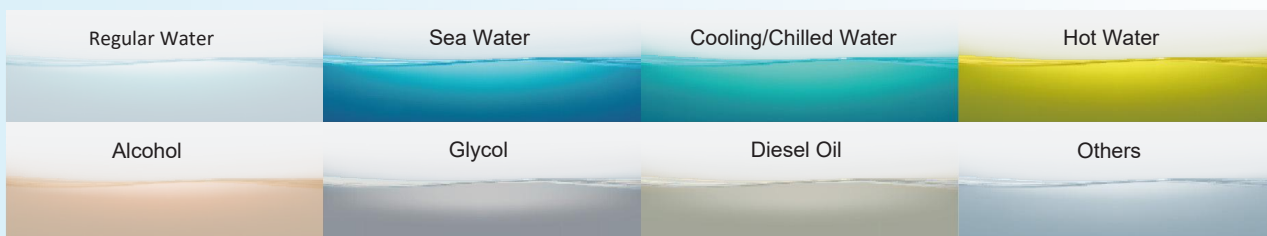
Cooling
Tower

Characteristics

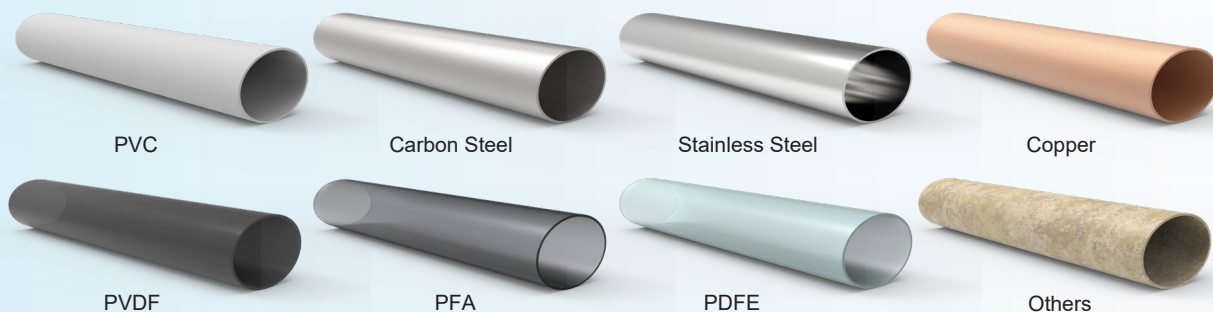


Ideal in Nearly any Situation

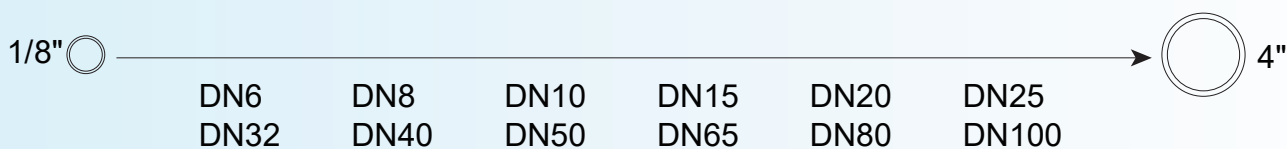
Detectable Fluids



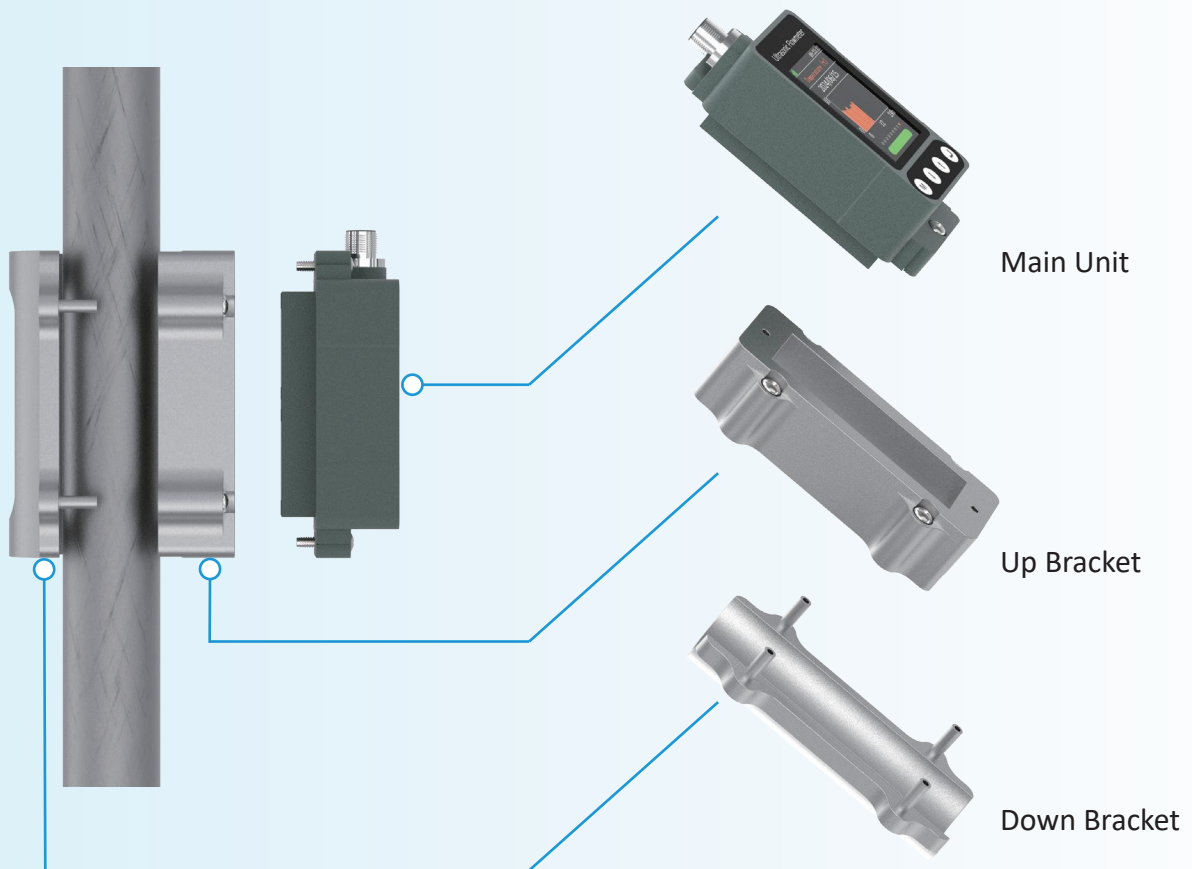
Compatible Pipe Materials



Available Pipe Sizes



Schematic Picture



Product View



Front View



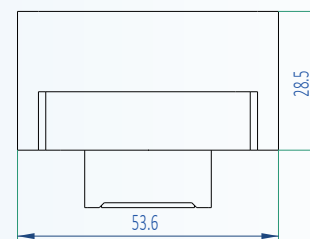
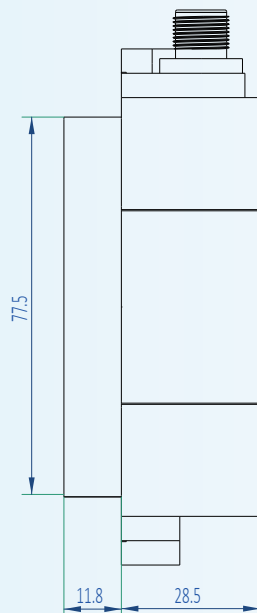
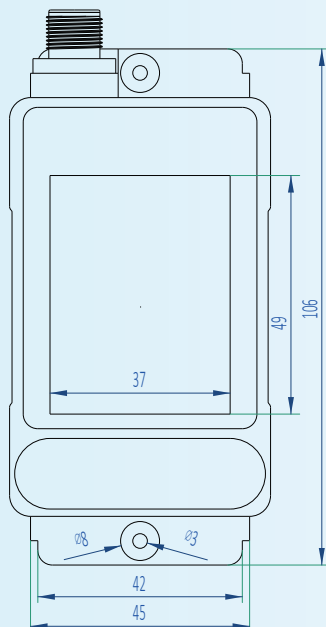
Top View



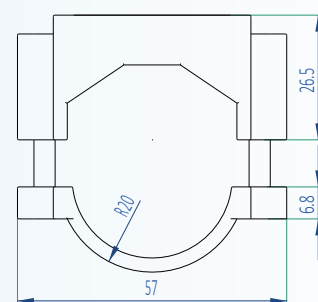
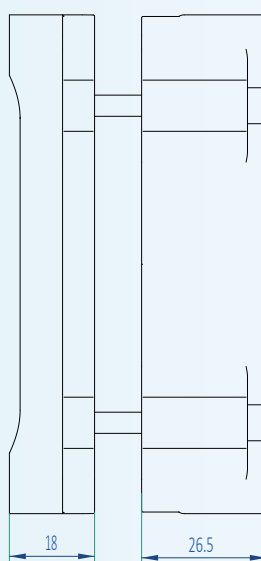
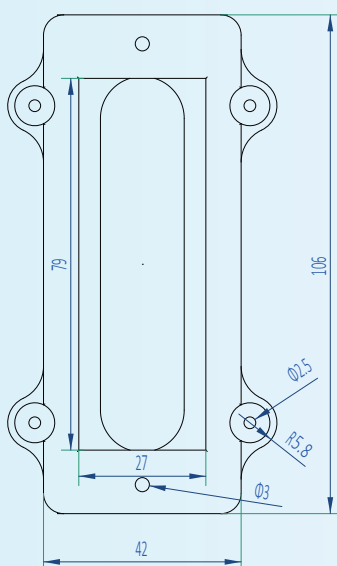
Side View

Product Dimension

Display Unit



Pipe Clamp

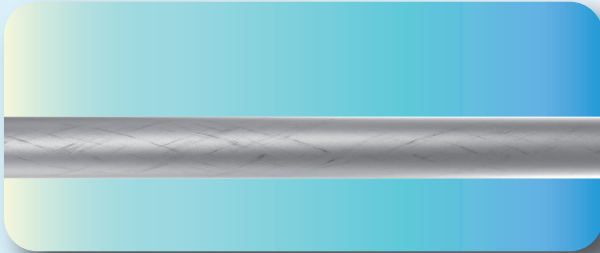


Pipe Size & Weight

Model	Φ9.53	Φ1 2.7	Φ1 5	Φ20	Φ25	Φ32
Weight(KG)	0.75	0.75	0.74	0.74	0.75	0.77
Model	Φ40	Φ50	Φ63	Φ75	Φ90	Φ1 1 0
Weight(KG)	0.76	0.77	0.94	0.98	1.49	1.75

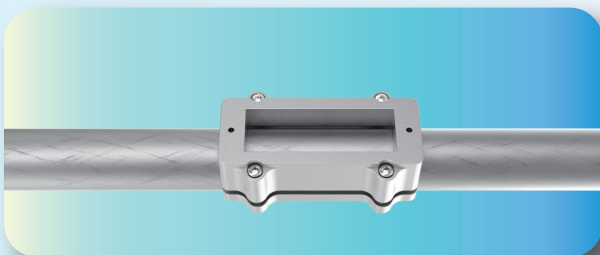
Operation Step

01 Clean the pipe



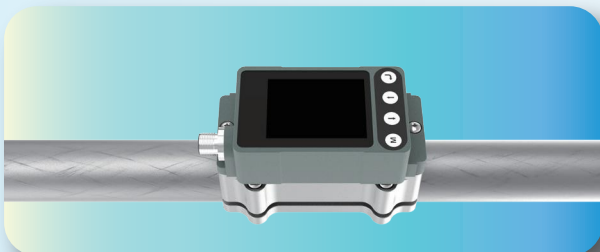
No dirt and oil contamination outside the pipe.

02 Install the bracket



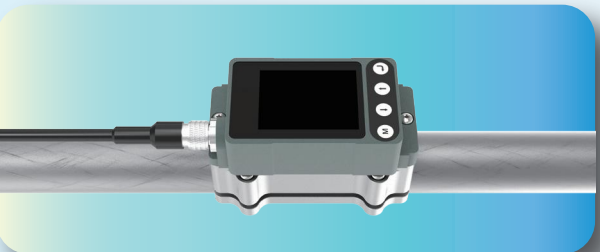
Align flow meter to the pipe position, install screw on top part of the bracket, and then the bottom part of the bracket will automatically connect with the top part. Fasten the four M4 screws.

03 Install the sensor part



Remove the protection film outside the sensor, put the sensor part into the bracket, and fasten the three M4 screws.

04 Cable connection



Take out the cable, and fasten it on the socket

05 Operation



Power on and see if the SQ is more than 50. If yes, this indicates that the measurement has been stable.

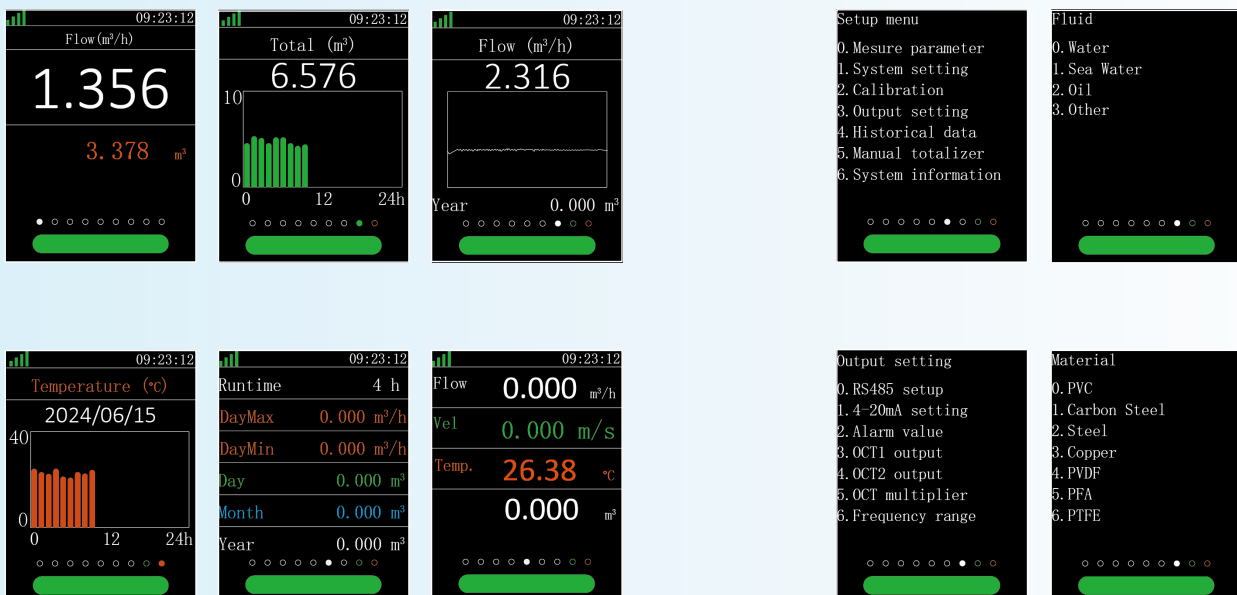


Panel Introduction

For different pipe diameters and pipe designs, the factory defaults have defaulted to the specified standard settings. there is no need to reset.



Menu Display



Specification

Performance Specifications

Velocity Rate	0.328 ft/s ~ ±16ft/s (0.1m/s ~ ±5m/s)
Accuracy	± 2.0%
Pipe Size	DN6 DN8 DN10 DN15 DN20 DN25 DN32
	DN40 DN50 DN65 DN80 DN100
Liquid	Regular water, sea water, cooling/hot water, alcohol...
Pipe Material	PVC, stainless steel, carbon steel, copper...

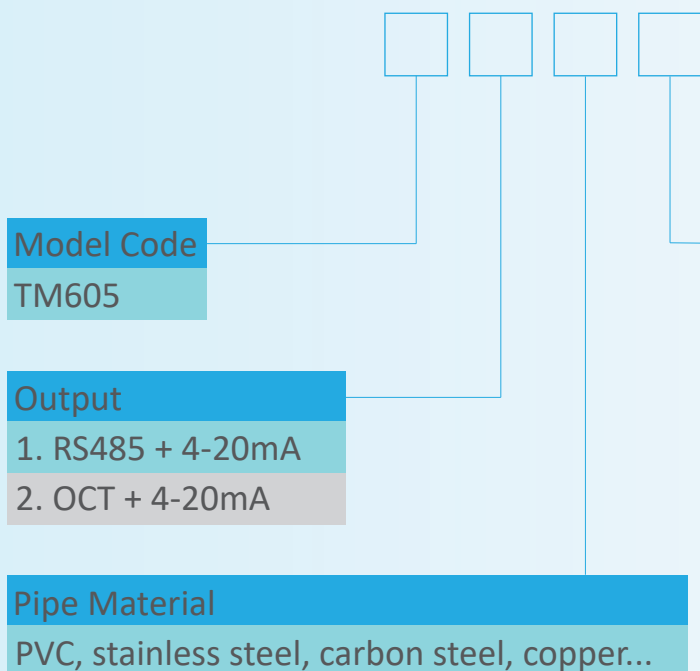
Function Specifications

Power Supply	24V DC, maximum 500mA
Communication	Support MODBUS protocol, RS485
Analog Output	4-20mA, Maximum 600Ω
Alarm Output	OCT upper and lower limit alarm function (optional)
Display	OLED 320*240 dot-matrix display screen
Key Panel	Four touch buttons
Flow Unit	Support metric unit selection, Cubic Meters(m³), Liters(l),
	USA Gallons(gal).
Time Unit	/hour, /min, The factory default unit is cubic meters per hour.
	Daily, Monthly, and Annual Flow Totalizer
Temperature	Ambient: 32°F~ +122°F (0°C ~ +50°C)
	Liquid: 32°F~ +122°F (0°C ~ +50°C)
Ambient Humidity	RH 0~95%, No condensation

Physical Specifications

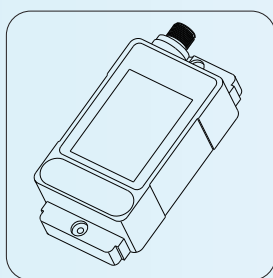
Housing Material	Aluminum alloy, CNC machined processing
Protection Rate	IP54
Cable Length	6.6ft (2m) standard

Order rule: TM605-1-A-DN25

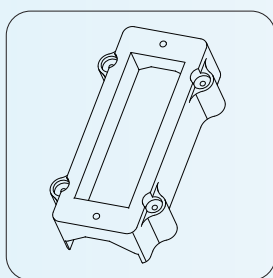


Pipe Size	Inch	Pipe Size	OD Range
DN6	1/8"	OD9.53	9.5mm-12mm
DN8	1/4"	OD9.53	12mm-14mm
DN10	3/8"	OD15	14mm-17mm
DN15	1/2"	OD20	17mm-20mm
DN20	3/4"	OD25	22mm-29mm
DN25	1"	OD32	30mm-35mm
DN32	1-1/4"	OD40	38mm-45mm
DN40	1-1/2"	OD50	48mm-54mm
DN50	2"	OD63	58mm-68mm
DN65	2-1/2"	OD75	68mm-78mm
DN80	3"	OD90	88mm-96mm
DN100	4"	OD110	108mm-116mm

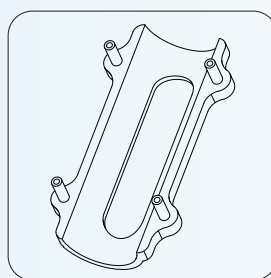
Packing List



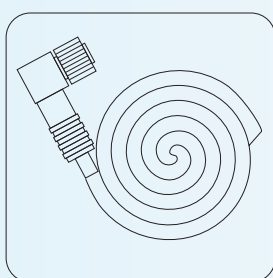
Main Unit



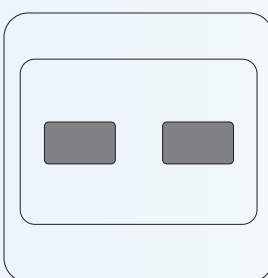
Up Bracket



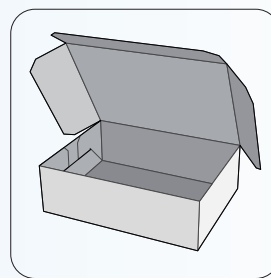
Down Bracket



Cable



Coupling Pad



Box

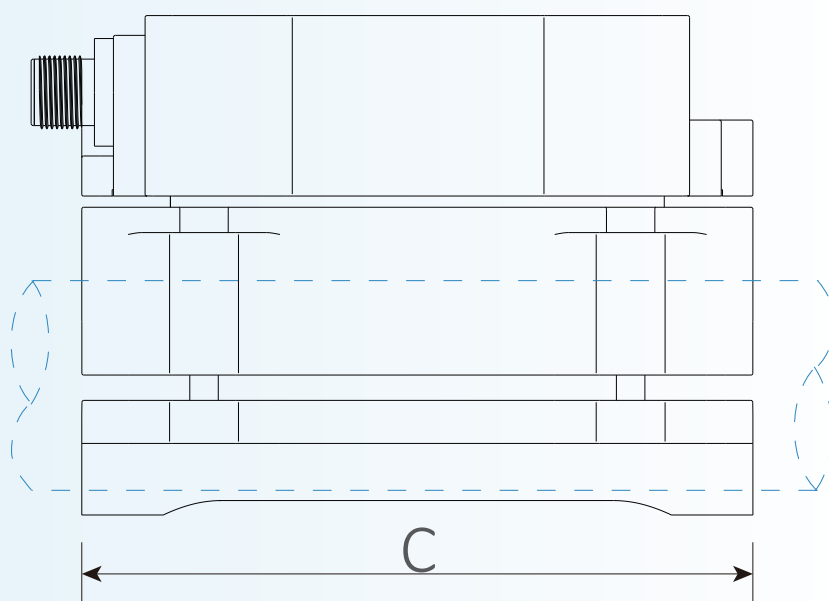
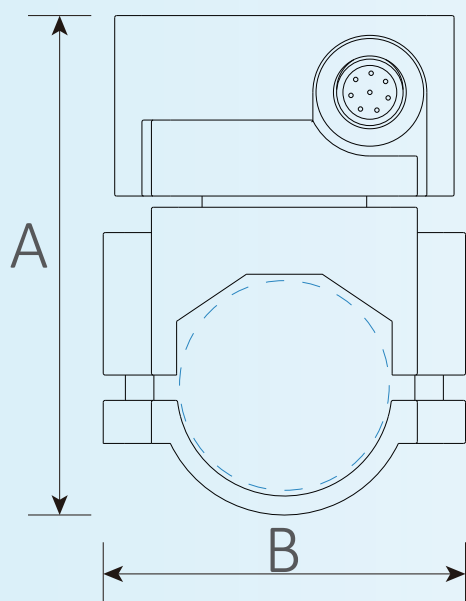
Appendix I — Pipeline Specifications & Flow Range

Diameter	DN	Inch	Diameter Range(mm)	Min (m ³ /h)	Max (m ³ /h)	Min (L/min)	Max (L/min)
Φ9.53	DN6	1/8"	9.5-12	0.02	0.7	0.4	12
Φ12.7	DN8	1/4"	12-14	0.05	1.7	0.9	28
Φ15	DN10	3/8"	14-17	0.09	3.0	1.5	49
Φ20	DN15	1/2"	17-20	0.06	3.2	1.1	53
Φ25	DN20	3/4"	22-29	0.11	5.7	1.9	94
Φ32	DN25	1"	30-35	0.18	8.8	2.9	147
Φ40	DN32	1-1/4"	38-45	0.29	14	4.8	241
Φ50	DN40	1-1/2"	48-54	0.45	23	7.5	377
Φ63	DN50	2"	58-68	0.71	35	12	589
Φ75	DN65	2-1/2"	68-78	1.2	60	20	995
Φ90	DN80	3"	88-96	1.8	90	30	1508
Φ110	DN100	4"	108-116	2.8	141	47	2356

Diameter	Flow Value(L/min)	
Φ9.53	Min: 0.4L/min Max: 12L/min	
Φ12.7	Min: 0.9L/min Max: 28L/min	
Φ15	Min: 1.5L/min Max: 49L/min	
Φ20	Min: 1.1L/min Max: 53L/min	
Φ25	Min: 1.9L/min Max: 94L/min	
Φ32	Min: 2.9L/min Max: 147L/min	
Φ40	Min: 4.8L/min Max: 241L/min	
Φ50	Min: 7.5L/min Max: 377L/min	
Φ63	Min: 12L/min Max: 589L/min	
Φ75	Min: 20L/min Max: 995L/min	
Φ90	Min: 30L/min Max: 1508L/min	
Φ110	Min: 47L/min Max: 2356L/min	

Appendix II — Product Dimension

Diameter	DN	Inch	Diameter Range(mm)	A (mm) Max	B (mm)	C (mm)
Φ9.53	DN6	1/8"	9.5-12	83	52	106
Φ12.7	DN8	1/4"	12-14	83	52	106
Φ15	DN10	3/8"	14-17	83	52	106
Φ20	DN15	1/2"	17-20	89	52	106
Φ25	DN20	3/4"	22-29	90	52	106
Φ32	DN25	1"	30-35	94	58	106
Φ40	DN32	1-1/4"	38-45	104	68	106
Φ50	DN40	1-1/2"	48-54	113	78	106
Φ63	DN50	2"	58-68	132	91	130
Φ75	DN65	2-1/2"	68-78	142	105	136
Φ90	DN80	3"	88-96	157	119	150
Φ110	DN100	4"	108-116	180	143	174



The ultrasonic flow meter specifically designed for water treatment and chemical industry



TM601S



TM602



SE603