

# M METERS

## VOLUMETRIC HIGH FLOW METERS



- ✓ Accuracy and stability
- ✓ High durability
- ✓ Minimum loss of pressure
- ✓ Versions for fuel, LPG or AdBlue/DEF
- ✓ From 1 1/2" to 6"

# M Meters

GESPASA meters of positive displacement (PD) of rotary movement, for the measurement in the transfer of fuels and industrial fluids

## Advantages

- Maximum accuracy in the measurement
- Minimum pressure drop
- Measuring system through three synchronised rotors that turn without wearing away the metal parts of the meter
- Minimum drop of accuracy:  
The M meter holds the accuracy because of its measuring chamber with a minimum friction which will assure you the maximum accuracy for a long time. No metal-to metal contact in the measuring chamber.
- Wide range of solutions in order to adapt the meter to your installation



## Technical features

Accuracy	±0.2%
Repeatability	< 0.07 %
Temperature range	-40 °C to +71 °C
Maximum pressure	10 bar
Viscosity range	30 SSU to 1 500 000 SSU
Materials	aluminium or stainless steel
Joints	Buna-N, Viton, PTFE



# M Meters

## Features

- System of mechanical calibration
- High accuracy and repeatability in the widest range of flow rates. Superior accuracy at constant flow
- Accuracy regardless of the pressure fluctuations, temperature variation, viscosity
- Low maintenance
- Long useful life
- Low pressure loss
- Only for measurement in installations with a pump

## Standard Specifications

- Aluminium body ('1') suitable for fuel-oil, diesel fuel, kerosene, ethylene glycol, motor oil and ink
- Mechanical resettable counter of 4.1 digits and cumulative non-resettable counter of 8 digits
- Prefilters of mesh of 80 µm (micron) for diesel. Optional in mesh of 40 µm (micron).
- Air eliminator (it must be under pressure, it cannot be empty)

### OPTIONAL FEATURES

Version available in stainless steel (only M-50) suitable for AdBlue/DEF

Ticket printer

#### Mechanical preset

Valve and mechanical register for the volume preset to be supplied

#### Electronic preset

Two-stage valve to preset de volume to be supplied through electronic console

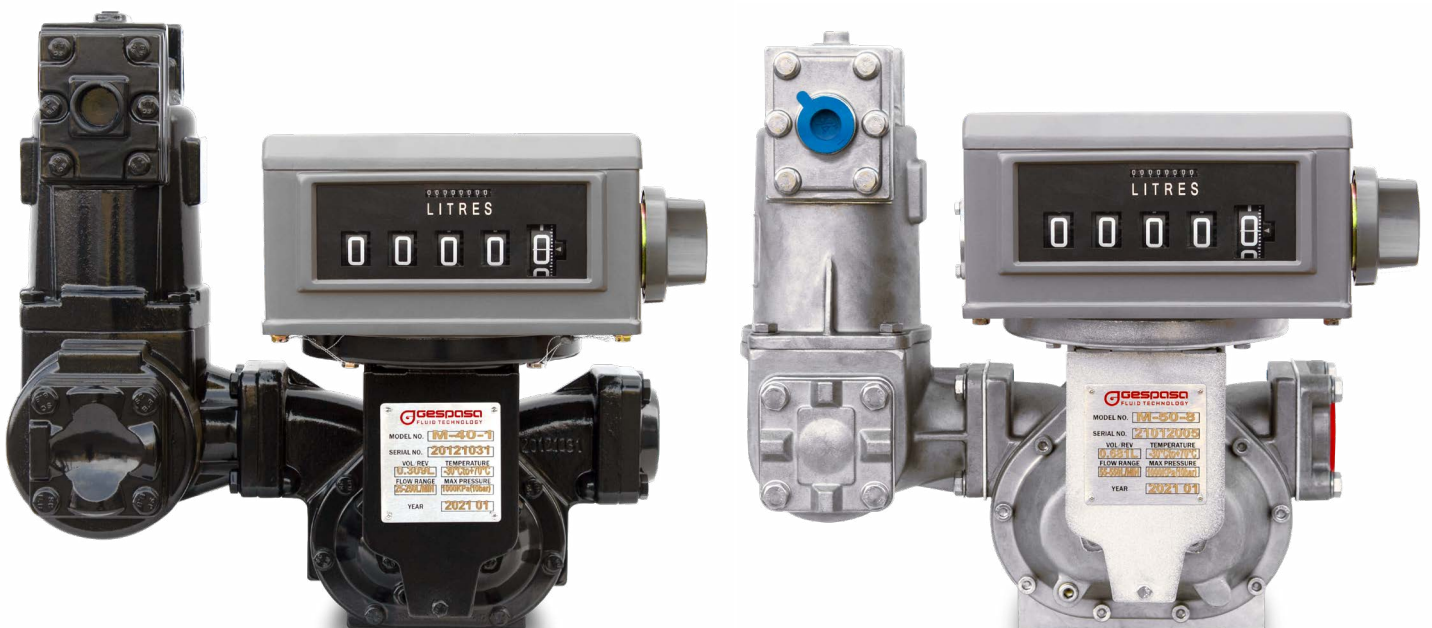
#### Pulser

with or without mechanical register

To install the pulser allows the connection to GESPASA GE consoles, GK-7 controller or external display.

GE · Electronic Display with signal output

GK-7 · Supply control



# M Meters

## Models and main features

	M-40	M-50	M-80	M-100	M-150
Meter material	aluminium	aluminium	aluminium	aluminium	aluminium
Partial register	4.1 digits resettable	4.1 digits resettable	4.1 digits resettable	4.1 digits resettable	4.1 digits resettable
Total register	8 digits	8 digits	8 digits	8 digits	8 digits
Prefilter	mesh of 80 µm	mesh of 80 µm	mesh of 80 µm	mesh of 80 µm	mesh of 80 µm
Degasser	Yes	Yes	Yes	Yes	Yes
Size	40 mm / 1 1/2"	50 mm / 2"	80 mm / 3"	100 mm / 4"	150 mm / 6"
Flow	25-250 l/min	55-550 l/min	115-1,150 l/min	170-1,700 l/min	300-3,000 l/min
Volume per round	0.309 L	0.681 L	1.839 L	5.102 L	9.507 L
Maximum pressure	10 bar / 145 PSI	10 bar / 145 PSI	10 bar / 145 PSI	10 bar / 145 PSI	10 bar / 145 PSI
Accuracy	±0.2%	±0.2%	±0.2%	±0.2%	±0.2%
Repeatability	< 0.07%	< 0.07%	< 0.07%	< 0.07%	< 0.07%
Standard measurement	litres · US GAL	litres · US GAL	litres · US GAL	litres · US GAL	litres · US GAL
Net weight (approx.)	23 kg	26 kg	40 kg	70 kg	130 kg
Gross weight (approx.)	25 kg	28 kg	47 kg	93 kg	180 kg
Packaging size LxWxH (approx.)	510x460x490 mm	510x460x490 mm	580x500x610 mm	760x640x720 mm	800x650x790 mm
Code (litre)	<b>808318005</b>	<b>808318004</b>	<b>808318003</b>	<b>808318002</b>	-
Code (US GAL)	<b>808318018</b>	<b>808318014</b>	<b>808318019</b>	-	-



M-40

M-50

M-80

M-100

M-150

**25-250**  
L/MIN

**55-550**  
L/MIN

**115-1,150**  
L/MIN

**170-1,700**  
L/MIN

**300-3,000**  
L/MIN

1 1/2"

2"

3"

4"

6"

# M Meters

## Versions



Only the meter



With degasser and prefilter



With preset and mechanical valve of automatic stop



With preset and mechanical valve of automatic stop + ticket printer



With pulse output, with or without mechanical register



With electronic display for pulse output

# M Meters

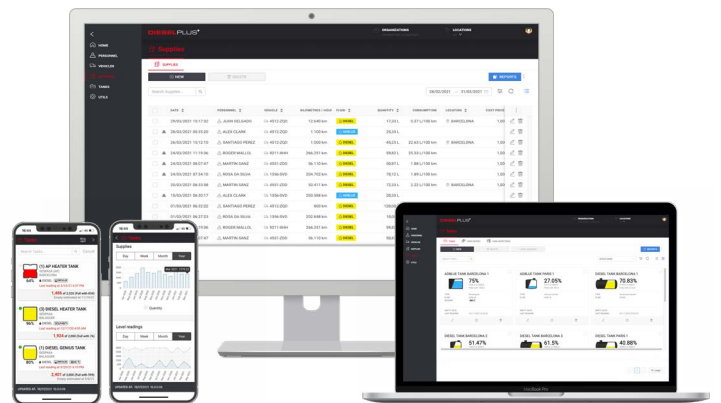
## Versions

With own consumption controller that allows the user identification and the supply transfer to PC

The GK-7Plus controller allows only the use to authorised personnel, identifying the vehicle or tank where it is supplied and automatically sends the supply data to a database.

From the software you will be able to have lists and all the data of the supplies made in real time.

You will be able to consult the data of the supplies from any device with a connection to the web [www.dieselplus.net](http://www.dieselplus.net)

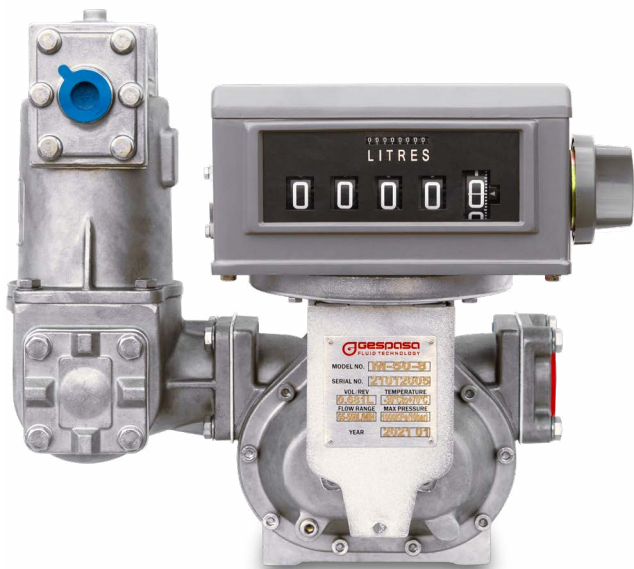


# M Meters

## Versions

### M-50 INOX for AdBlue/DEF

M-50 version available in stainless steel. Suitable for compatible fluids such as AdBlue/DEF or other fluids.



**55-550**  
L/MIN

2"

### M-50 for LPG

M-50 version available for the measurement of LPG · Maximum pressure: 24 bar




**55-550**  
L/MIN


2"

# M METERS

Ref. 20210915.V2



Partida Horta d'Amunt s/n  
25600 Balaguer (Lleida) · Spain  
 +34 973 451 072

 [www.gespasa.es](http://www.gespasa.es)  
[gespasa@gespasa.es](mailto:gespasa@gespasa.es)

