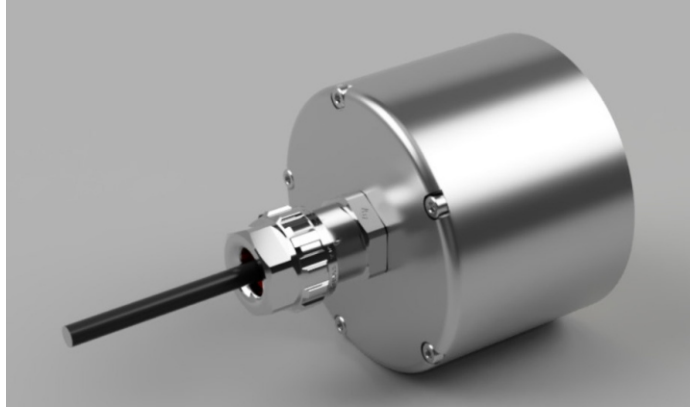
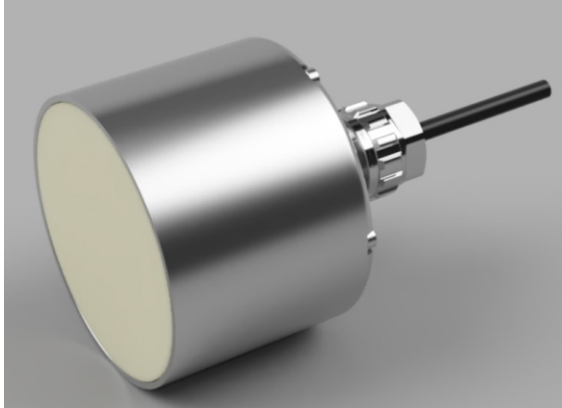


# Temporary Technical Data

Version 2

## Litronic-FMS planar sensor P78-E22



### Basic Data

Suitable for use in potentially explosive atmospheres

3D - Zone 22

Physical principle:

Capacity determination with high-frequency stray field

Measured frequency:

16 - 22 MHz

Sensor location:

Outside silo via deflector, on conveyor belt with sliding shoe, pipes, worm conveyor, tanks, ...

Measuring range:

0 – 100 % moisture content (measuring window adjustable)

Capacitance resolution:

10 fF

Cycle of up-date:

32,64 ms

Sampling rate for average calculation:

16 - 22 10<sup>6</sup>

Max. measuring accuracy of moisture with optimal material specific calibration, mean value with ideal material flow, with Litronic-FMS II Interchange and evaluation unit / PC-software:

+/- 0,05 % moisture content

Measuring value transmission method:

digital: RS-485, Multi-processor protocol

Max. Number of sensors at the bus:

16

Max. cable length:

1200 m

Power supply:

8..30V, 0.4 VA

Measuring range of temperature::

-10 - 90 °C

Measuring accuracy - temperature measurement:

+/- 0,5 °C

Working ambient temperature:


5 - 72 °C

Working temperature electronics:

-20 - 80 °C

# Temporary Technical Data

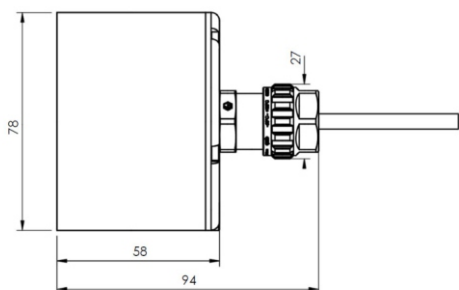
Version 2

Storing temperature:	-25 - 80 °C
Protection class:	IP68
Connecting cable type / length	Multispeed 500-C PUR UL/CSA 7G0,5mm2 (20AWG) black, 6 m
Material wear protection:	Zirkon oxide ( $\text{ZrO}_2\text{Al}_2\text{O}_3$ )
Material shell / flange:	V4A 1.4404 (Option: 1.4571)
Dimension: Ø / height:	78 / 94 mm
Weight without cable:	0,900 kg
Weight clamping flange:	0,300 kg
Type examination certificate	in the approval process
Ex-identification	 II 3D Ex Tc IP6x T120°C Dc

## X Please take care on following special conditions of use!

- ☐ For the power supply of the sensor use only a power supply for the relevant device category.
- ☐ The cable can only be installed movable if the ambient temperature around is between 5 °C and 70 °C.
- ☐ If the cable has to be connected within the potentially explosive area, the cable must have a minimum protection class of IP-6x or another accepted type of protection for that area.
- ☐ The allowed ambient temperature is between -20 °C and + 80 °C.

Dimensional drawing:



Assembly / Master gauge:

