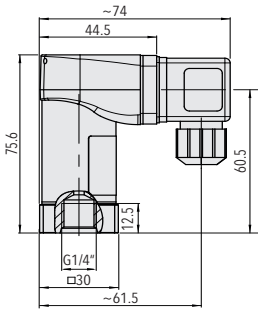
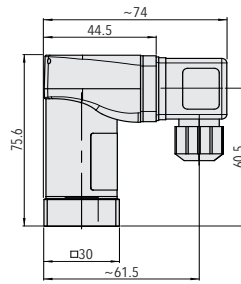
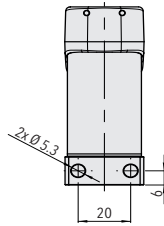


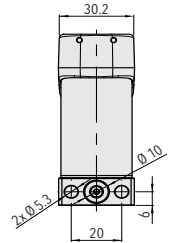
Dimensions



9R5.XXXX.XXX.04.XX.XX

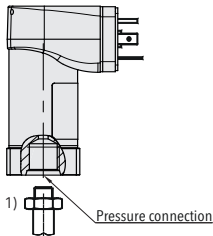


9R5.XXXX.XXX.11.XX.XX



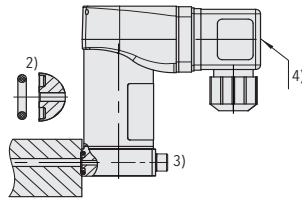
Mounting / installation

Axial pressure connection

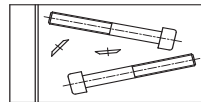
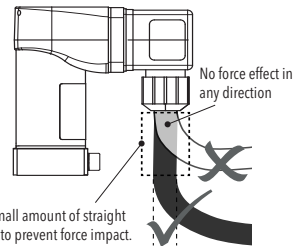


- 1) Torque: G 1/4": MA = 32 ... 40 Nm
- 2) O-ring: \varnothing 6.75 x 1.78
- 3) Fastening screw: M5 x 40
Property class: 8.8
Mounting torque: 4.5 ... 6 Nm
- 4) Torque connector center screw: max.0.6 Nm

Flange pressure connection



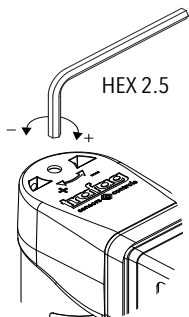
Cabling / cable run



M5x40 ISO4762

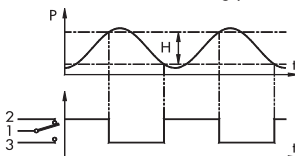
9R5.XXXX.XXX.XX.V3

Switching point adjustment



- +: increase of the switching point (cw)
- : reduction of the switching point (ccw)

H: The Hysteresis depends on the set switching point.



Attention

