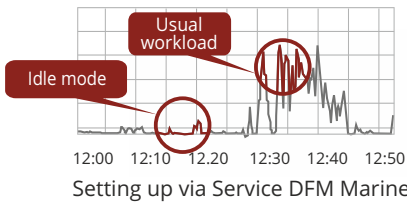
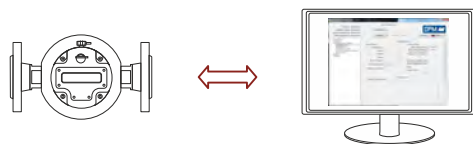


DFM Marine measures engine fuel consumption and operating time of engines, boilers/burners, defining fuel consumption in different operation modes.



Diagnostics

- Instant fuel consumption chart
- Event log: tampering, interference, ignition ON/OFF, low/high level of supply voltage
- Fuel temperature
- Self-diagnostics code



Setting up

- Operation modes boundaries
- Temperature correction coefficient
- Switching on/off display of particular screens
- Units of measure: metric/us

Counters

Information shown on DFM Marine display:

- hourly fuel consumption;
- total fuel consumption;
- total operating time;
- engine operating time in idle mode;
- engine operating time in optimal mode»;
- engine operating time in overload mode.

Digital interfaces contain fuel consumption data on **idle**, **optimal** and **overload** modes of engine.

Features

- Data transfer protocols SAE J1939 and NMEA 2000
- MAX pressure:
 - flange connection 25 bar
 - connection thread 16 bar
- Viscosity of working fluid 1,5 - 6,0 mm²/s (cSt)
- Operating temperature - 40 .. +85/135 °C *
- Measuring chamber material brass
- Inaccuracy rate** ± 0,5 %

* Special model on request

** For fuel consumption up 50 L/h inaccuracy rate is possible up to ± 1%

Marking DFM 4000 C K F A

