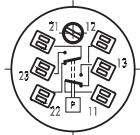
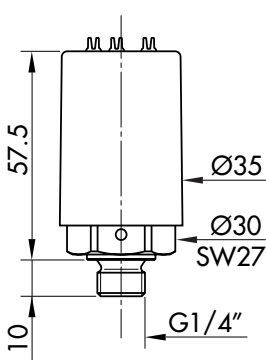
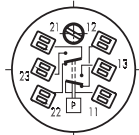
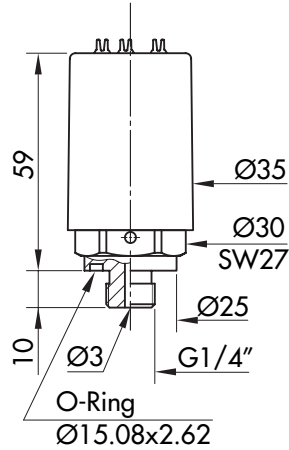


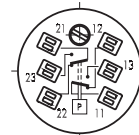
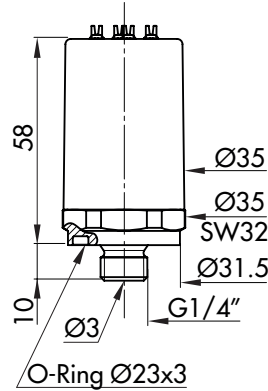
Massbilder / Cotes d'encombrement / Dimensions



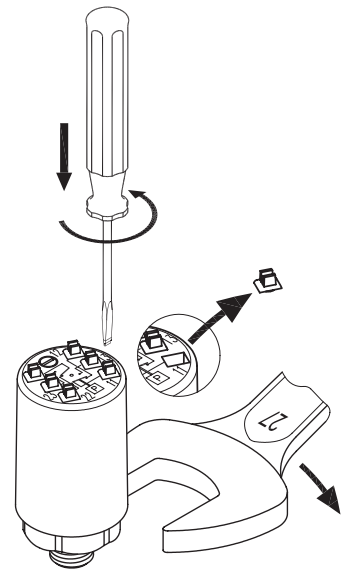
987/988.XXXX.945/946/947
Standard



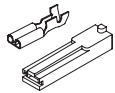
987/988.XXXX.939/948/949
O-Ring, nicht im Lieferumfang enthalten
O-Ring, non inclus dans la livraison
O-Ring, is not included



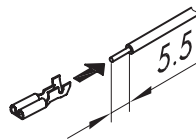
987/988.XXXX.846/847
O-Ring, nicht im Lieferumfang enthalten
O-Ring, non inclus dans la livraison
O-Ring, is not included



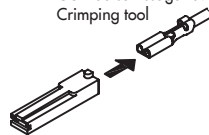
Zubehör / Accessoires / Accesorios 09



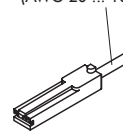
Flachsteckhülsen 2.8 x 0.5 mm und Isolierkappen (2 x 6 Stk.)
Clips plats (2.8 x 0.5 mm) et capuchons isolants pour clips plats (2 x 6 pcs.)
Blade receptacle (2.8 x 0.5 mm) and insulator for flat plugs (2 x 6 pcs.)



Ansetzgerät
Outil de sertissage 3975B
Crimping tool



0.75 ... 1.00 mm²
(AWG 20 ... 18)



Umgebungstemperatur / Température ambiante / Ambient temperature

-25°C ... +70°C

Medientemperatur / Température des médias / Media temperature

-25°C ... +80°C

Lagertemperatur / Température de stockage / Storage temperature

-40°C ... +80°C

Anziehdrehmoment Druckanschluss / Couple de serrage raccord de pression / Torque moment pressure connection

max. 25Nm

Schutzart / Protection / Protection

IP40

Messbereich / Plage de mesure / Measuring range

Bereich	-0.3 ... 1.3	Überdruck max.	-1... 4	Berstdruck	10	72
Plage	0 ... 1.6	Surpression	-1... 4	Pression destruction	10	73
Range	0 ... 2.5	Over pressure	-1... 4	Burst pressure	10	75
	0 ... 4.0		-1... 6		10	76
[bar]	1 ... 10.0	[bar]	-1... 15	[bar]	15	78

Bereich/ Plage/ Range	[bar]	-0.3...1.3	0...1.6	0...2.5	0...4	1...10
Einstell-Toleranz Tolérance d'ajustage Tolerance of setting	[bar]	±0.08	±0.08	±0.12	±0.16	±0.2

Schaltdifferenz (typ.) / Différentiel de l'interrupteur (typ.) / Switching differential (typ.) @ 25°C

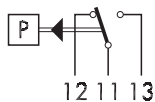
Balgfühler Capteur soufflet Bellows sensor	Bereich/ Plage/ Range [bar]	-0.3...1.3	1...1.6	0...2.5	0...4	1...10
		Mikroschalter/ Microrupteur/ Microswitch	42/84	0.1	0.1	0.2
P max.		-1...4	-1...4	-1...4	-1...6	-1...15

Schaltdifferenz [bar]: nicht einstellbar
 Différentiel de l'interrupteur [bar]: non ajustable
 Switching differential [bar]: not adjustable

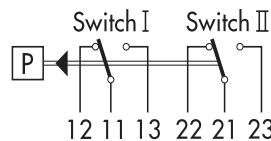
Elektrische Daten Schalter / Spécifications électriques de l'interrupteur / Electrical data switch

Typ Type Type	Merkmale Caractéristiques Features	Schaltleistung ⁴⁾ Pouvoir de coupure Rating			
		AC		DC	
42 (IP67) Standard	Silberkontakte Contacts en argent Silver contacts	250 V	6 (1) A	220 V	0.25 (0.1) A
				110 V	0.5 (0.2) A
				60 V	1(0.5) A
				24 V	3 (2) A
				12 V	6 (6) A
84 (IP67)	Mit Goldkontakten, geeignet für eigensichere Schaltkreise Avec contacts dorés, approprié pour les circuits à sécurité intrinsèque Gold plated contacts, suitable for intrinsically safe circuits	max. 30 V 0.1 (0.1) A min. 5 V 5 mA			

²⁾ Ohmsche Last (Induktive Last)
 Charge ohmique (Charge inductive)
 Resistive Load (Inductive Load)



987



988