

# ADJUSTABLE PRESSURE SWITCHES SPDT TYPE PFS243

Max Voltage: 250 Volt  
 Current: 6 A Resistive  
 Certification: CE  
 Contact: SPDT  
 Electrical Connection: Faston 6,3x0,8  
 Standard Materials: Zinc plated steel body  
 HNBR diaphragm/Gasket  
 Nylon 6/6 fv.30 Swith housing  
 Silver plated contact  
 Electrical protection: IP00 - The Pressure switch is supplied without Protection Cap  
 IP65 with CP65 protection cap  
 Mechanical life: 10<sup>6</sup> cycle (Membrane)  
 Isteresys: ~25% of set point  
 Setting: Internal screw  
 Mounting: Hexagon Body Sw24

**PFS243**



**CP65**



Rev.08/2018

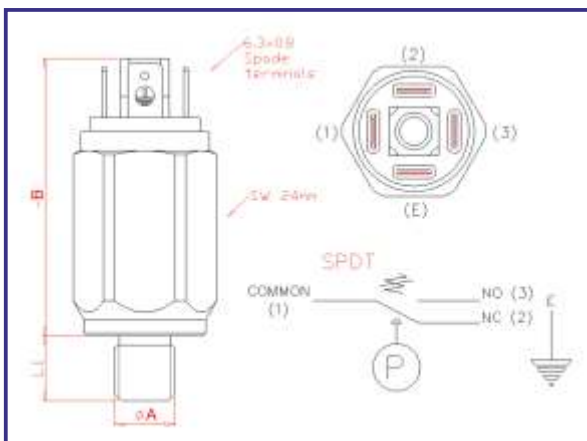
## ORDERING CODE

**PFS243 10 BR E S 14 T5D**

<b>TYPE</b>	Pressure switches SPDT
<b>ADJUSTABLE RANGE</b>	1 - 2 - 10 - 20 - 50 - 80 - 300
<b>BODY MATERIALS</b>	ZP - BR - SS3 - SS6
<b>MEMBRANE MATERIALS</b>	HN - NB - V - S - E - SS
<b>CONTACT</b>	S (SPDT)
<b>CONNECTIONS</b>	18 - 14 - 18C - 14C M10 - 18N - 14N
<b>SPECIAL EXECUTIONS</b>	T - TD - G - SG - ST** - SW

## CODE EXPLANATION

**TYPE**  
 PFS243 Adjustable pressure switch - SPDT contact  
**RANGE**  
 1 0,1 + 1 bar (max. working pressure 10 bar) - B=55 mm  
 2 0,5 + 2 bar - B=55 mm  
 10 1 + 10 bar - B=55 mm  
 20 10 + 20 bar - B=55 mm  
 50 20 + 50 bar - B= 55 mm  
 80 30 + 80 bar - B=55 mm  
 300 50 + 300 bar - B=58 mm  
**BODY MATERIAL**  
 ZP Zinc plated steel (standard)  
 BR Brass Max press. 80 bar  
 SS3 Stainless steel AISI 303  
 SS6 Stainless steel AISI 316  
**DIAPHRAGM/GASKET MATERIALS/TEMPERATURE**  
 HN HNBR -20 ... +120 °C (standard)  
 NB NBR -20 ... +90 °C  
 V FKM -25 ... +120 °C  
 S Silicone -40 ... +140 °C  
 E EPDM -20 ... + 120 °C  
 SS Inox -30 ... +140 °C (P. Max 80 bar)  
**CONTACT**  
 S Changeover SPDT  
**CONNECTIONS Quote A**  
 18 1/8" GAS Taper L1=10 mm  
 14 1/4" GAS Taper L1=12 mm  
 18C 1/8" Parallel L1=10 mm  
 14C 1/4" Parallel L1=12 mm  
 M10 M10x1 L1=10 mm  
 18N 1/8"-27NPT L1=10 mm  
 14N 1/4"-18 NPT L1=12 mm  
**SPECIAL EXECUTIONS**  
 T Rising set point @ indicated value  
 TD Falling set point @ indicated value  
 G Gold plated Contact for low current  
 SG Degreased for oxygen  
 ST\*\* Special threads (NPT, SAE, Metrico etc...)  
 SW Special wiring (Automotive, Integrated/free connector etc...)



TYPE	Adjustable Range (bar rel.)	Maximum static pressure bar	Fixed hysteresis @ 25°C (bar)	Set-point tolerance @ 25°C (bar)	Execution
<b>PFS243</b>					
1	0,1 + 1	350 bar	25% set point	±0,08	Membrane
2	0,2 + 2	350 bar	25% set point	±0,15	Membrane
10	1,5 + 10	350 bar	25% set point	±0,8	Membrane
20	9 + 20	350 bar	25% set point	±1,0	Membrane
50	15 + 50	350 bar	25% set point	±2,0	Membrane
80	40 + 80	350 bar	25% set point	±2,5	Membrane
300	40 + 300	600 bar	25% set point	±15	Piston